

JAMES HARVEST SPORTSWEAR  
SPRING/SUMMER 2021

JAMES  
**HARVEST**  
sports *wear*

HARVEST



JAMES  
**HARVEST**  
sports wear



The James Harvest Sportswear collection is based on American collegiate fashion and is characterised by high quality.

A huge amount of effort has been put into the design in order to make the clothes both functional and fashionable.

Experience continues to show that many businesses and organizations that regard quality as an important element in their market communication regularly choose James Harvest Sportswear as their supplier of identity clothes/advertising garments.

**ADDS PROFILE TO YOUR BUSINESS®**



**2**



**T-shirts**



**6**



**Poloshirts**



**Sweaters  
& Knitwear**



**12**



***Shirts***



***20***



***24***



***Jackets & Fleece***



***38***



***Accessories***



PART OF A FAMILY



PORTWILLOW



LARKFORD



PARKWICK

**PORTWILLOW 2114008** ♂

Roundneck T-shirt with chest pocket in contrast colour.

100% COMBED, RINGSPUN COTTON, 160 G/M<sup>2</sup>. PRE-SHRUNK.

2114008 XS-3XL



131 GREYMELANGE



406 RED MELANGE



506 LIGHT BLUE MELANGE



606 DARK BLUE MELANGE



906 BLACK MELANGE



100 WHITE

121 ASH

400 RED

555 FADED BLUE

600 NAVY

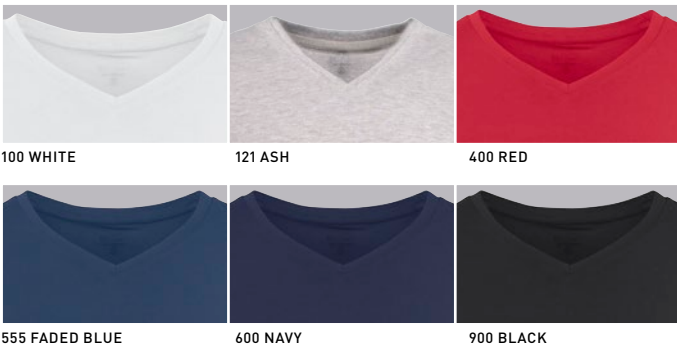
900 BLACK

**AMERICAN U 2134017 ♂**  
**AMERICAN U WOMAN 2124008 ♀**

V-neck T-shirt for men. 2-layered stretch rib in the neck. Oeko-Text certified.

**100% RING-SPUN, COMBED AND ENZYME-WASHED COTTON (MELANGE 95% COTTON, 5% VISCOSE)**

2134017 S-3XL  
 2124008 XS-XXL



100 WHITE

121 ASH

400 RED

555 FADED BLUE

600 NAVY

900 BLACK

**AMERICAN V 2134018 ♂**

Crewneck T-shirt for men and women. 2-layered stretch rib in the neck. Oeko-tex certified.

**100% RING-SPUN, COMBED AND ENZYME-WASHED COTTON (MELANGE 95% COTTON, 5% VISCOSE)**

2134018 S-3XL



100 WHITE

120 GREY MELANGE

900 BLACK



474 DUSTY PINK

514 SUMMER BLUE

SLUB FABRIC

**TWOVILLE 2114005 ♂**  
**TWOVILLE WOMAN 2124005 ♀**

Modern style round neck t-shirt. Slub tricot cotton fabric.

100% COTTON (120 GREY MEL. 85% COTTON/15% VISCOSE), 160 G/M<sup>2</sup>

2114005 S-3XL  
 2124005 XS-XXL



100 WHITE

120 GREY MELANGE

900 BLACK



474 DUSTY PINK

514 SUMMER BLUE

SLUB FABRIC

**WHAILFORD 2114006 ♂**  
**WHAILFORD WOMAN 2124006 ♀**

V-neck t-shirt in modern style. Slub tricot cotton fabric.

100% COTTON (120 GREY MEL. 85% COTTON/15% VISCOSE), 160 G/M<sup>2</sup>

2114006 S-3XL  
 2124006 XS-XXL





100 WHITE

900 BLACK

**STONETON 2114007 ♂**  
**STONETON WOMAN 2124007 ♀**

Long sleeved sweater in cotton tricot. Placket and contrasting seam on shoulder. Fabric is made of a slub yarn which gives a mélange effect to fabric.

**100% COTTON, 160 G/M<sup>2</sup>**

2114007 S-3XL

2124007 XS-XXL



**LAFAYETTE 2124001 ♀**

Short-sleeved, round-neck ladies top with slim-fitted shape.

**90% COTTON, 10% LYCRA®, 220 G/M<sup>2</sup>**

2124001 S-XXL



100 WHITE

900 BLACK



**LYNN 2124003 ♀**

Ladies V-neck stretch top with 3/4 sleeve.

**90% COTTON, 10% LYCRA®, 220 G/M<sup>2</sup>**

2124003 XS-XXL



100 WHITE

900 BLACK

# FIND YOUR POLOSHIRT

## MATERIALS

COMPACT COTTON

COTTON/ELASTAN

NEPTUNE

SUNSET  
GREENVILLE

## CUTS

REGULAR



MODERN



WOMAN





OEKO-TEX®  
 STANDARD 100  
 Made for harmful substances.



100 WHITE

212 DEEP SUN

400 RED



488 DARK RED

600 NAVY

622 PETROL



630 BLUE HEAVEN

900 BLACK

919 ANTRACITE

**NEPTUNE REGULAR 2135031 ♂**  
**NEPTUNE MODERN 2135032 ♂**  
**NEPTUNE WOMAN 2125033 ♀**

Polo shirt with side slits and matching buttons. Enzyme wash for a softer and smoother surface. The treatment makes the polo shirt pre shrunk. Neptune is available in three stylish cuts; the traditional Regular, the more fitted Modern and the carefully figured Woman.

**100% COMBED COMPACT COTTON, 200 G/M<sup>2</sup>**

- 2135031 S-4XL
- 2135032 S-XXL
- 2125033 XS-XXL





LYCRA®  
 OEKO-TEX®  
 STANDARD 100  
 by Hohenstein



100 WHITE      400 RED      600 NAVY



631 BRIGHT BLUE      729 SPORT GREEN      900 BLACK

**GREENVILLE REGULAR 2135035 ♂**  
**GREENVILLE MODERN 2135036 ♂**  
**GREENVILLE WOMAN 2125036 ♀**

Polo shirt with a classic white stripe at collar and sleeve. Comfortable stretch material in Lacost knit. Enzyme washed. Three mother of pearl-look buttons. Woman version with shorter placket and no buttons. Grey stripe on white polo shirts. Greenville is available in three stylish cuts; the traditional Regular, the more fitted Modern and the carefully figured Woman.

95% RINGSPUN, COMBED COTTON, 5% LYCRA®, 200 G/M<sup>2</sup>

- 2135035 S-4XL
- 2135036 S-XXL
- 2125036 XS-XXL



100 WHITE      308 ORANGE VINTAGE      400 RED



471 PINK      600 NAVY      668 LIGHTBLUE



729 SPORTY GREEN      900 BLACK

**SUNSET REGULAR 2135033 ♂**  
**SUNSET MODERN 2135034 ♂**  
**SUNSET WOMAN 2125034 ♀**

Polo shirt with side slits and white buttons in a comfortable cotton/Lycra® material. Sunset is available in three stylish cuts; the traditional Regular, the more fitted Modern and the carefully figured Woman.

95% COMBED COMPACT COTTON, 5% LYCRA®, 200 G/M<sup>2</sup>

- 2135033 S-4XL
- 2135034 S-XXL
- 2125034 XS-XXL

PART OF A FAMILY



PORTWILLOW



LARKFORD



PARKWICK



131 GREY MELANGE

406 RED MELANGE

506 LIGHT BLUE MELANGE



606 DARK BLUE MELANGE

906 BLACK MELANGE

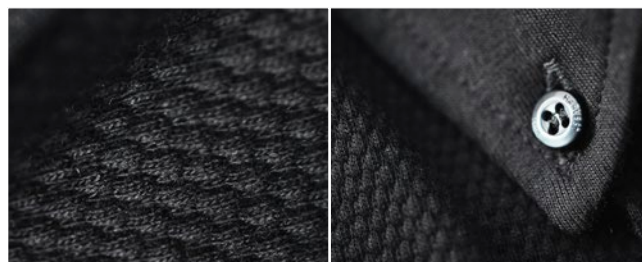
**LARKFORD 2135030** ♂  
**LARKFORD WOMAN 2125031** ♀

Piqué shirt with button-down collar, detail in Oxford inside collarstand, rib in cuffs in contrast.

100% COMPACT COTTON, 250 G/M<sup>2</sup>

2135030 S-3XL

2125031 XS-XXL



121 ASH

900 BLACK

**SHELLDEN 2115001** ♂  
**SHELLDEN WOMAN 2125032** ♀

Polo shirt with side slits. Jaquard front and back with flat knitted sides, sleeves and collar. Men's shirt with button-down, chest pocket and four button collar stand. Women's style with buttoned front.

100% COTTON, 190 G/M<sup>2</sup>

2115001 S-3XL

2125032 XS-XXL



100 WHITE

400 RED



600 NAVY

900 BLACK

PART OF A FAMILY



AVON



NOVAHILL

**AVON 2135024 ♂**  
**AVON WOMAN 2125026 ♀**

Polo pique in combed compact cotton with contrasting tape at neck, placket, side vent and loop at sleeve end. Bicoloured buttons. Contrast colour at reversed side collar.

100% COMBED COMPACT COTTON, 240 G/M<sup>2</sup>

2135024 S-3XL  
 2125026 XS-XXL



100 WHITE

400 RED



600 NAVY

900 BLACK

PART OF A FAMILY



ANDERSON  
 ANTREVILLE



ATLANTA  
 APEX

**ANDERSON 2135023 ♂**  
**ANTREVILLE 2125025 ♀**

Polo pique with yarn dyed collar. Contrasts at reversed side collar, placket and sleeve rib. Tape and half moon at neck.

100% COMPACT COTTON, COLLAR WITH ELASTANE, 240 G/M<sup>2</sup>

2135023 S-3XL  
 2125025 XS-XXL







121 GREY MELANGE

555 FADED BLUE

600 NAVY



900 BLACK

**DUKE 2132023 ♂**  
**DUKE WOMAN 2122039 ♀**

Hood jacket. Metal zip at center front and pockets. Drawstring at hood.

100% TERRY COTTON (MELANGE: 95% COTTON, 5% VISCOSE),  
 ENZYME WASH, 280 G/M<sup>2</sup>

2132023 S-3XL  
 2122039 XS-XXL



121 ASH

555 FADED BLUE

600 NAVY



900 BLACK

955 FADED GREY

**CORNELL 2132022 ♂**  
**CORNELL WOMAN 2122038 ♀**

Classic college crewneck sweater.

100% TERRY COTTON (MELANGE: 95% COTTON, 5% VISCOSE),  
 ENZYME WASH, 280 G/M<sup>2</sup>

2132022 S-3XL  
 2122038 XS-XXL

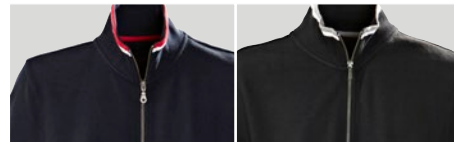
PART OF A FAMILY



ANDERSON  
ANTREVILLE



ATLANTA  
APEX



600 NAVY

900 BLACK

ATLANTA 2132018 ♂  
APEX 2122035 ♀

Heavy knitted cardigan in pique with contrasts at collar and sleeves.

100% COTTON, 320 G/M<sup>2</sup>

2132018 S-3XL

2122035 XS-XXL

PART OF A FAMILY



AVON



NOVAHILL



100 WHITE

400 RED



600 NAVY

900 BLACK

NOVAHILL 2132019 ♂  
NOVAHILL WOMAN 2122019 ♀

Sweatshirt jacket in heavy jersey with unbrushed inside. Contrasting tape in neck, along zipper and at bottom rib. Front pockets. Half-moon in neck with printed label. rxx rib with elastane in rib. Rib detail at neck.

80% COTTON 20% POLYESTER, 320 G/M<sup>2</sup>

2132019 S-3XL

2122019 XS-XXL

PART OF A FAMILY



PORTWILLOW



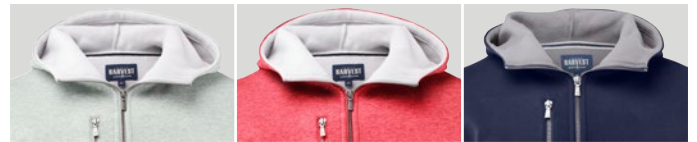
LARKFORD



PARKWICK



DOUBLEFACE



131 GREY MELANGE

406 RED MELANGE

600 NAVY



606 DARK BLUE MELANGE

900 BLACK

PARKWICK 2111033 ♂  
PARKWICK WOMAN 2121034 ♀

Hooded jacket in double face with fleecce on the inside. Metal zip front and right chest pocket. Rib at bottom hem and sleeve cuffs.

100% COTTON SHELLFABRIC, 100% POLYESTER INSIDE, 320 G/M<sup>2</sup>

2111033 S-3XL

2121034 XS-XXL





140 GREY MELANGE

600 NAVY

609 BLUE MELANGE



900 BLACK

909 ANTHRA MELANGE

OEKO-TEX®  
CERTIFIED BY ITS  
STANDARD 100  
BY H. M. H. BERNHARDT  
Partner for more sustainable.

**ASHLAND V 2112507 ♂**  
**ASHLAND V WOMAN 2122505 ♀**

Fine knit V-neck cotton sweater, 1 x 1 rib at cuff and hem. Double flatknit at neck.

**100% COTTON, 12 GG**

2112507 S-3XL

2122505 XS-XXL



140 GREY MELANGE

600 NAVY

900 BLACK

**ASHLAND U 2112512 ♂**  
**ASHLAND U WOMAN 2122509 ♀**

U-neck knitted sweater. 1x1 rib at the bottom and bottom sleeves. Double-folded edge at the neck. Oeko-Tex 100 certified.

**100% COTTON, 12 GG**

2112512 S-3XL

2122509 XS-XXL



140 GREY MELANGE

600 NAVY

900 BLACK

**ASHLAND TURTLE 2112513 ♂**  
**ASHLAND TURTLE WOMAN 2122510 ♀**

Turtleneck knitted sweater. 1x1 rib at the bottom, bottom sleeves and roller neck. Oeko-Tex 100 certified.

**100% COTTON, 12 GG**

2112513 S-3XL

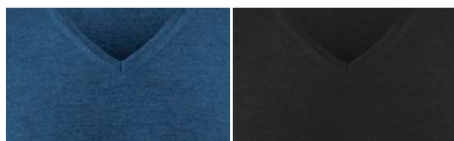
2122510 XS-XXL



142 GREY MELANGE

183 GREIGE

600 NAVY



625 PETROL MELANGE

900 BLACK

**WESTMORE 2112509 ♂**  
**WESTMORE WOMAN 2122508 ♀**

Fine knit V-neck sweater. Doublefolded single knit at neck. 1 x 1 rib at cuff and hem. 220 g/m<sup>2</sup>.

100 % BARUFFA MERINO WOOL, 14 GG. 220 G/M<sup>2</sup>.

2112509 S - 3XL  
 2122508 XS-XXL



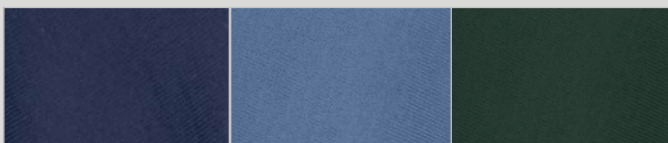
HIGH QUALITY  
 YARN BY  
**TWU.**



142 GREY MELANGE

252 SAFFRON

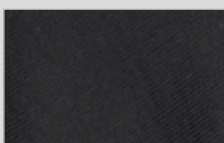
486 WINE



600 NAVY

605 DENIM MELANGE

710 FOREST GREEN



900 BLACK

**PONCHO 2127000 ♀**

Fine knitted poncho with flatknitted edges. One size

50 % WOLL, 50% ACRYLIC (DRALON®). 250 G/M<sup>2</sup>.

2127000 ONE SIZE



138 GREY      600 NAVY      900 BLACK

**BROCKWAY 2112511 ♂**

Heavy knit Full-Zip Cardigan. Metal zip with leather-like zip puller. Elbow patches (flat knitted in same yarn). Knitted rib at bottom, btm sleeve and collar (double layer).

50% COTTON, 50% ACRYLIC, 7 GG, 3-PLY

2112511 XS-3XL



138 GREY MELANGE      600 NAVY      900 BLACK

**FLATWILLOW 2112505 ♂**

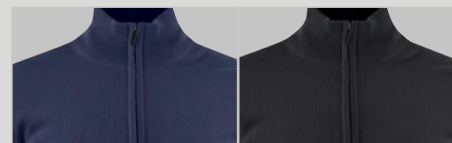
Heavy knit 1/2-Zip Sweater. Metal zip with leather-like zip puller. Elbow patches (flat knitted in same yarn). Knitted rib at bottom, btm sleeve and collar (double layer).

50% COTTON, 50% ACRYLIC, 7 GG, 3-PLY

2112505 XS-3XL



145 GREY MELANGE      565 BLUE FOG



600 NAVY      900 BLACK

**SONETTE 2112510 ♂**  
**SONETTE WOMAN 2122507 ♀**

Fine knitted cardigan. Men's style with full zip and double knitted collar. Buttoned ladies cardigan with open round neck. Folded at sleeve and bottom hem.

50% COTTON, 50% ACRYLIC (DRALON®), 12 GG. 230 G/M<sup>2</sup>.

2112510 S-3XL  
2122507 XS-XXL



PLAYERS' CHOICE   
*by James Spence*



100 WHITE



506 BLUE



914 GREY

**REDDING 2113033 ♂**  
**REDDING WOMAN 2123023 ♀**

Modern fit, high quality oxford shirt with Easy Care treatment. Tone-in-tone buttons and necktape in contrast colour.

**100% COMBED COTTON, 135 G/M<sup>2</sup>.**

2113033 S-3XL  
2123023 XS-XXL





513 LIGHT BLUE

613 NAVY

913 BLACK

**RENO 2113031** ♂  
**RENO WOMAN 2123021** ♀

High quality shirt in combed cotton. Shirt in easy care treated fabric and enhanced lining seams, collar and sleeve ends. Striped pattern with contrast fabric under collar, placket and bottom sleeve. Modern fit.

100% COMBED COTTON

2113031 S-3XL  
 2123021 XS-XXL



PLAYERS' CHOICE   
*by James Hackett*



100 WHITE

500 LIGHT BLUE



600 NAVY

900 BLACK

**BALTIMORE 2113030** ♂  
**BALTIMORE WOMAN 2123020** ♀

High quality shirt in combed cotton. Shirt in Easy Care treated fabric and enhanced lining seams, collar and sleeve ends. Solid colour body fabric with contrast fabric under collar, placket and bottom sleeve. Modern fit.

100% COMBED COTTON

2113030 S-3XL  
 2123020 XS-XXL



PLAYERS' CHOICE   
*by James Hackett*



513 LIGHT BLUE

533 NAVY

903 BLACK

**TRIBECA 2113032** ♂  
**TRIBECA WOMAN 2123022** ♀

High quality shirt in combed cotton. Shirt in Easy Care treated fabric and enhanced lining seams, collar and sleeve ends. Check pattern with contrast fabric under collar, placket, sleeve and neck tape. Modern fit with cutting seams at back.

100% COMBED COTTON

2113032 S-3XL  
 2123022 XS-XXL



PLAYERS' CHOICE   
*by James Hackett*



592 BLUE DENIM



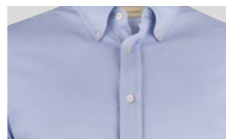
992 BLACK DENIM

**JUPITER 2113035 ♂**  
**JUPITER WOMAN 2123025 ♀**

Denim shirt. Player's choice fitting. Button down collar, adjustable sleeve cuffs. Chest pocket on both sides. Checked pattern contrast on the inside of yoke and cuffs. Slightly curved bottom hem

**100% COTTON. DENIM LOOK, 135 G/M<sup>2</sup>**

2113035 S-3XL  
 2123025 XS-XXL



501 LIGHT BLUE



601 NAVY



901 BLACK

**BURLINGHAM 2113038 ♂**  
**BURLINGHAM WOMAN 2123028 ♀**

Jersey shirt with oxford look. Woven details inside collar and side slits. Button down collar on men. Pearly colored buttons. Adjustable cuffs.

**60% COTTON/40% POLYESTER , 165 G/M<sup>2</sup>**

2113038 S-3XL  
 2123028 XS-XXL



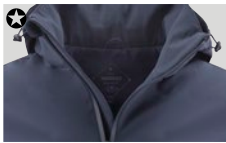
**TREEMORE 2113037 ♂**  
**TREEMORE WOMAN 2123027 ♀**

Twill shirt in classic denim style cut. Western yoke and pockets with flaps. Soft collar, adjustable cuffs and curved bottom hem. Enzyme washed.

100 % COTTON TWILL, 150 G/M<sup>2</sup>.

2113037 S-3XL  
2123027 XS-XXL





600 NAVY



704 MOSS GREEN



900 BLACK

★ LODGETOWN 2131042 ♂

★ LODGETOWN WOMAN 2121040 ♀

Wind and water repellent softshell jacket. Reversed waterproof zipper at center front and side pockets. Inner pocket with zipper on the left side. Detachable hood. Adjustable velcro closure at bottom sleeves. Hood and seam are adjustable with elastic cords. Hidden embroidery zipper on the inside.

SHELL: 96% POLYESTER, 4% ELASTANE, 285 G/M², BONDED WITH 100% POLYESTER BIRDS EYE, WP 3000/MVP 3000. LINING: 100% POLYESTER (SLEEVES) + 100% POLYESTER MESH (BODY)

2131042 S-3XL  
2121040 XS-XXL



600 NAVY

704 MOSS GREEN

900 BLACK

**WOODLAKE 2111037 ♂**  
**WOODLAKE WOMAN 2121041 ♀**

Padded winter jacket. Reversed waterproof zipper at center front and side pockets. Side pockets finished together with the seam of the jacket on the inside, so they can be used as inner pockets as well. Adjustable press button closure at bottom sleeves. Hood adjustable with elastic cords on the sides, finished with an elastic tape at the seam.

**SHELL: 100% RECYCLED PES, 230 G/M<sup>2</sup>, BONDED WITH A PU MEMBRANE, WP 5000/ MVP 100 (GRS APPROVED).**

**PADDING: 100% RECYCLED PES REPREVE PADDING (BLUESIGN)**

2111037 S-3XL  
2121041 XS-XXL





900 BLACK

**KINGSPORT 2111032 ♂**  
**KINGSPORT WOMAN 2121033 ♀**

Light padded jacket with hidden hood in the collar. Two bellow pockets and two slanted chest pockets with visible metal zippers.

100% POLYESTER, PADDING 100% POLYESTER, 80 G/M<sup>2</sup>

2111032 S-3XL  
 2121033 XS-XXL



400 RED

600 NAVY



722 FORRESTGREEN

900 BLACK

**HARRINGTON 2111031 ♂**

Unisex jacket in timeless design. Metal zip at center front and right chest pocket. Outside pockets with pushbuttons. Knitted rib at bottom hem, bottom sleeves and top of collar. Lining at the back in checked contrast. Left inner pocket with zip and right inner pocket with button.

SHELL 50% COTTON, 50% POLYESTER. LINING: 75% CO, 25% POLYESTER. SLEEVE LINING: 100% POLYESTER.

2111031 XS-3XL



600 NAVY

900 BLACK

**HUNTINGVIEW 2111030 ♂**  
**HUNTINGVIEW WOMAN 2121030 ♀**

Trendy quilted jacket. Five front pockets and two inside pockets. Soft fabric inside the two big front pockets to keep hands warm. Snap buttons with embossed Harvest logo at front pockets, cuffs and collar flap.

100% POLYESTER

2111030 S-3XL  
 2121030 XS-XXL





542 SPORTY BLUE

600 NAVY

900 BLACK

**MILES 2131501 ♂**  
**MILES WOMAN 2121501 ♀**

Smooth fleece jacket. The material is "Waffle-Knitted" for best insulation and moisture transport. Mesh lined pocket bags that also contribute to extra ventilation openings. Wind placket behind the main zipper. Thumb opening at the sleeve end.

**94% POLYESTER, 6% ELASTANE, 260 G/M<sup>2</sup>.**

2131501 S-3XL  
2121501 XS-XXL





#1	WP	10K	MVP	4K
#2	WP	.8K	MVP	6K



542 SPORTY BLUE

600 NAVY

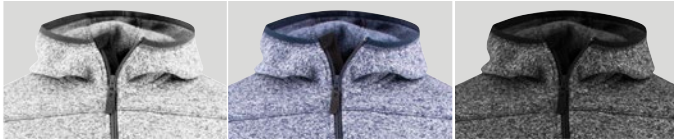
900 BLACK

**MYERS 2131041** ♂  
**MYERS WOMAN 2121038** ♀

Hybrid jacket of wind and water repellent softshell and heat-quilted interlock with high breathability. Softshell parts in sleeves, shoulders and hood. Body of heat-quilted interlock with microfleece inside. C6 treatment of the entire jacket. Adjustable hood opening and lower edge with elasticated waistband and Velcro strap. Zipper in inner pocket. Mesh-lined front piece. Extra ventilation through front pockets.

**SOFT SHELL; 96% POLYESTER, 4% ELASTANE, 280 G/M². BONDED WITH 100% PES FLEECE. WP = 10,000, MVP = 4,600. BODY: THERMAL QUILTED INTERLOCK WITH MICRO FLEECE INSIDE: 100% POLYESTER, 280 GR / M². WP = 800, MVP = 6,000**

2131041 S-3XL  
 2121038 XS-XXL



135 GREY

607 NAVY MELANGE

907 ANTHRACITE

**RICHMOND 2132017** ♂  
**SANTA ANA 2122034** ♀

Heavy knit fleece jacket with decorative flatlock seams and elastic tipping. Zippers at centre front and front pockets. Brushed on the inside for a soft feeling. Anti-pilling treated.

100 % POLYESTER, 320 G/M<sup>2</sup>

2132017 S-3XL  
 2122034 XS-XXL



135 GREY MELANGE

607 NAVY MELANGE

907 ANTRACITE MELANGE

**RICH HILL 2131503** ♂  
**RICH HILL WOMAN 2121503** ♀

Heavy knit fleece jacket. 100% Polyester yarn with mélangé effect. Brushed inside. Zippers and flatlock seams in contrast color. Zipped front pockets. Elastic bindings at bottom and btm sleeves.

100% POLYESTER YARN WITH MÉLANGÉ EFFECT. BRUSHED INSIDE.

2131503 S-3XL  
 2121503 XS-XXL



DOUBLEFACE

**FUNCTIONAL GARMENT**  
WP 3K MVP 3K



542 SPORTY BLUE



600 NAVY



900 BLACK

**LOCKWOOD 2131502 ♂**  
**LOCKWOOD WOMAN 2121502 ♀**

Durable softshell jacket with good breathability. The fleece side is on the inside of the body, collar and sleeve top and on the outside at the sides and lower arms. Stretch edge band at the bottom and sleeve end.

**PIQUÉ KNITTED SOFTSHELL, PLATED WITH FLEECE. WP3000/ MVP3000. 100% POLYESTER, 320 G/M<sup>2</sup>**

2131502 S-3XL  
2121502 XS-XXL



**FUNCTIONAL GARMENT**  
WP 5K MVP 5K



900 BLACK



600 NAVY

**COVENTRY 2131037 ♂**  
**COVENTRY WOMAN 2121026 ♀**

Functional sport jacket with taped seams and waterproof zippers. Zipper opening at back and hood lining for embroidery and print. Detachable hood. Elastic adjustment at bottom hem.

**100% POLYESTER WP 5000/MVP5000, TAPED SEAMS**

2131037 S-3XL  
2121026 XS-XXL



100 WHITE



137 LIGHT GREY



600 NAVY



900 BLACK

**NORTHDERRY 2131500 ♂**  
**NORTHDERRY WOMAN 2121500 ♀**

Thick fleece jacket with proven high resistance to pilling. The design is modern and sporty, fitting is modern and comfortable. Hood, contrasting flat lock seams and thumbhole at sleeve end. Elastic drawstring at hood and hem.

100% POLYESTER, 300 G/M<sup>2</sup>

2131500 S-3XL  
2121500 XS-XXL



**CORDURA**



**FUNCTIONAL GARMENT**  
WP 8K MVP 5K



137 LIGHT GREY



600 NAVY



900 BLACK

**ISLANDBLOCK 2131038 ♂**  
**ISLANDBLOCK WOMAN 2121031 ♀**

Functional shell jacket with contemporary design and modern fitting. Zip under armhole makes for better ventilation. Sleeve pocket, front pockets, chest pocket and inner pocket. High abrasion resistant Cordura on elbows and lower back. High front collar, adjustable hood, reflective piping in body colour and contrasting YKK zips.

**SHELL FABRIC: 94% POLYESTER, 6% ELASTHANE, 150 G/M<sup>2</sup> (WP 8000 / MVP 5000) & 100% NYLON CORDURA, 223 G/M<sup>2</sup>**

2131038 S-3XL  
2121031 XS-XXL





**Thermolite®**



600 NAVY



900 BLACK

**DEER RIDGE 2131039 ♂**  
**DEER RIDGE WOMAN 2121032 ♀**

Quilted lightweight jacket with Thermolite® Micro. Fully lined. Hidden hood in the collar (invisible zip). Reversed coil zippers. Elastic binding at bottom hem and sleeves. The jacket can be tucked into the frontpocket as a travelbag.

**SHELL FABRIC; 100% PES, CIRE FINISH ON THE INSIDE, 56 GSM WITH 100% PES PADDING (THERMOLITE® MICRO, 60 GSM). LINING; 100% NYLON**

2131039 S-3XL  
 2121032 XS-XXL



**Thermolite®**



600 NAVY



900 BLACK

**DEER RIDGE VEST 2131040 ♂**  
**DEER RIDGE VEST WOMAN 2121037 ♀**

Quilted lightweight vest with Thermolite® Micro. Fully lined. Reversed coil zippers. Elastic binding at bottom hem and arm openings. The vest can be tucked into the frontpocket as a travelbag.

**SHELL FABRIC; 100% PES, CIRE FINISH ON THE INSIDE, 56 GSM WITH 100% PES PADDING (THERMOLITE® MICRO, 60 GSM). LINING; 100% NYLON**

2131040 S-3XL  
 2121037 XS-XXL



BIONIC-WATER  
RESISTANT FINISH



600 NAVY

900 BLACK

**BRINKLEY 2111036 ♂**  
**BRINKLEY WOMAN 2121039 ♀**

Winter parkas with real down feeling. All vital seams taped. Adjustable with elastic cord at hood opening and at waist. Metal zip at front. Magnet buttons under front wind shield and under pocket flaps. Hidden push buttons at top and bottom front. Zipped chest pockets. 1 "Napoleon" pocket. Adjustable sleeve with push buttons and knitted rib inside.

100% POLYESTER, SHELL FABRIC; 100% PES WITH MEMBRANE, 5000WP/ 5000MVP. BIONIC-FINISH ECO WATER RESISTANT FINISH. PADDING FROM RECYCLED PES (BLUESIGN), 160 GSM (2,6 - 2,8 CLO) IN BODY, 140 GSM (2,3 - 2,5 CLO) IN SLEEVES. ALL VITAL SEAMS TAPED

2111036 S-3XL  
2121039 XS-XXL





600 NAVY

**ROCKINGFIELD 2111035 ♂**  
**ROCKINGFIELD WOMAN 2121036 ♀**

Winter jacket. Quilted lining "Sofeclate" by DuPont, Ecofriendly renewable-sourced fiber. Hand feel and warmth retention close to natural down. Shell fabric on T/C 65/35 composition with C6 waterproof finish + PU coating on the inside. Metal zippers at front pockets and C.F zip. Magnets under windshield at front + metal push buttons (2 at top and 1 at btm). Adjustable with cord string at bottom hem and hood opening. Rib at btm sleeve (on the inside). Inner pocket with zip.

**SHELL FABRIC; 65% PES, 35%. LINING; QUILTED 100% PES LINING (140 GSM SORONA BY DUPONTS INSULATION). OUTER FABRIC 203 G/ M².**

2111035 S-3XL  
 2121036 XS-XXL



600 NAVY

**HURSTBRIDGE 2111034 ♂**  
**HURSTBRIDGE WOMAN 2121035 ♀**

City coat with hood. Adjustable cord at waist and bottom hem. Leather-like stoppers and zip pullers. Cotton lined (sleeves in nylon). C6 water repellent finish. Black metal zippers at front and chest pockets. Buttoned windshield. Wide welted pockets with zippers at front. Zipped inner pocket.

**SHELL FABRIC; 52% COTTON, 45% NYLON, 3% ELASTANE (SANDWICH CONSTR.). BODY LINING; 100% COTTON, POPLIN SLEEVE LINING; 100% NYLON**

2111034 S-3XL  
 2121035 XS-XXL





600 NAVY

630 SKY BLUE

900 BLACK

**BURNWOOD 2137003** ♂

Cap in twill with vintage look. Curved screen and 6 panels. Adjustable with metal buckle at the back. One Size.

**100% COTTON**

2137003 **ONE SIZE**



100 WHITE

400 RED



600 NAVY

900 BLACK

**L.A. 2137002** ♂

Cap in brushed cotton twill with precurved peak and adjustable Velcro strap at back.

**100% COTTON**

2137002 **ONE SIZE**



180 KHAKI

556 LIGHT BLUE

591 BLUE



600 NAVY

704 MOSS GREEN

802 CAMEL



900 BLACK

936 GREY

**OFFICER 2116004 ♂**  
**OFFICER WOMAN 2126006 ♀**

Modern, well-fitted pants in an agreeable, soft material for optimal comfort and freedom of movement. The combination of cotton and elastane ensures that the pants goes back to its original fit wash after wash. The fabric is treated with an enzyme treatment which pre-shrinks the material and makes it soft and dust repellent. Men: Weltd back pockets with contrasting bartacking stitches. Women: Patched back pockets and adjusted side pockets for an extra feminine touch.

98% COTTON, 2% ELASTHAN, 280-290G/M<sup>2</sup>, YKK ZIPPER

2116004 W29-30-31-32-33-34-36-38-40 / L32-36

2126006 W25-26-28-29-30-32-34-36 / L32-34



150 SAND

600 NAVY

**CARSON 2116005 ♂**  
**CARSON WOMAN 2126007 ♀**

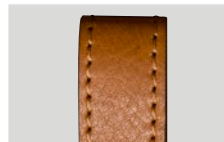
Modern, well-fitted shorts in an agreeable, soft material for optimal comfort and freedom of movement. The combination of cotton and elastane ensures that the shorts is comfortable and doesn't loose the shape. The fabric is treated with an enzyme treatment which pre-shrinks the material and makes it soft and dust repellent. Weltd back pockets. YKK zipper.

98% COTTON, 2% ELASTHAN, 280-290G/M<sup>2</sup>

2116005 S-3XL

2126007 XS-XXL





805 COGNAC

#### KEY RING 2117004

Keychain with leather loop. Ring dimension, 30 mm. Top of brushed steel. Size; 7.0 cm (+ ring) x 2.0 cm

**100% GENUINE LEATHER NICKEL FREE METAL**

2117004 7 X 2 CM (+RING)



805 COGNAC

#### CARD HOLDER 2117005

Card holder in leather with 5 slots. Easy access to the front card.

**100 % GENUINE LEATHER. PARTLY COTTON LINED.**

2117005 10,5 X 7,5 CM



805 COGNAC

#### MONTICELLO 2117502

Fully lined leather Toiletry Bag with double slider 5mm metal zipper and an external pocket. Size: bottom; 24 cm x 9 cm, 13 cm high, (25 cm wide at the top).

**100 % GENUINE LEATHER. COTTON LINING. NICKEL FREE, BRUSHED METAL ZIPPERS AND DETAILS.**

2117502 24 X 9 X 13CM



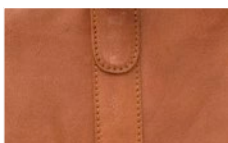
805 COGNAC

**SUMMITVILLE 2117500**

Fully lined leather computer bag for computers up to 15". Double slider metal zipper. Cotton lining and multiple pockets inside. Adjustable cotton shoulder strap with leather shoulder pad. Zippers and details in brushed steel. Leather with cotton lining and nickel free metal. 37 x 27 x 6 cm

**100 % GENUINE LEATHER. COTTON LINING. NICKEL FREE, BRUSHED METAL ZIPPERS AND DETAILS.**

2117500 37 X 27 X 6 CM



805 COGNAC

**WOODRIDGE 2117501**

Fully lined week-end leather bag with 2-way 5mm metal zipper. Adjustable / detachable cotton shoulder strap with leather shoulder pad. Zippers, D-rings and other metal parts in brushed steel. Size: Bottom; 55 cm long x 30 cm wide (25 cm wide at the top), 30 cm height.

**100 % GENUINE LEATHER. COTTON LINING. NICKEL FREE, BRUSHED METAL ZIPPERS AND DETAILS.**

2117501 55 X 30 X 30 CM



HARVEST ON SALE



173 SAND

510 LIGHT BLUE

801 BROWN

**AMERICAN T 2134011** ♂  
**AMERICAN T WOMAN 2124002** ♀

T-shirt in a modern cut. Neck rib in four layers and neck tape for better stability. Modernized shoulder seam.

100% COTTON, 180 G/M<sup>2</sup>

2134011 S-XL  
 2124002 S-XXL



955 FADED GREY

955 FADED GREY

**AMHERST VINTAGE POLO 2135028** ♂  
**AMHERST VINTAGE POLO WOMAN 2125029** ♀

Collar-T polo. Single jersey with woven collar. Hidden buttons at front placket. Enzyme wash gives a vintage look.

100% COTTON, FLAT KNIT 280 G/M<sup>2</sup>. HEAVY ENZYME WASH.

2135028 S-3XL  
 2125029 XS-XXL



400 RED

600 NAVY

**HARTLINE 2135019** ♂  
**AURORA 2125020** ♀

100 % PIMA COTTON, 220 G/M<sup>2</sup>

2135019 S-XXL  
 2125020 XS-XL



100 WHITE

400 RED

900 BLACK

**RAWLINS 2145007** ♂

Mens polo with 3 buttons at front placket, side slits and contrast neck tape. Stitched eyelets at armpit, flat lock seams at chest, collar with contrast stripes and mesh ending.

97% COTTON 3% ELASTANE, 240 G/M<sup>2</sup>

2145007 S-3XL



100 WHITE

400 RED

900 BLACK

**RIPLEY 2145006** ♂

Mens polo with 3 buttons at front placket, side slits and contrast neck tape. 2 layer collar.

97% COTTON 3% ELASTANE, 240 G/M<sup>2</sup>

2145006 S-3XL



131 GREY MELANGE

600 NAVY

900 BLACK

**KNOWVILLE 2112501** ♂

Cardigan in soft cotton quality. Ribb with elastane at sleeve and bottom hem.

100% COTTON

2112501 S-3XL



HARVEST ON SALE



320 ORANGE

400 RED

722 GREEN

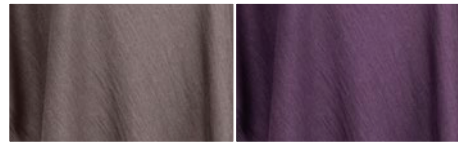
**NOTTINGMOON PULLOVER V-NECK 2112503 ♂**  
**NOTTINGMOON LADY PULLOVER 2122503 ♀**

V-neck knitted sweater - men. Fully fashion, 2 x 2 rib at bottom and btm sleeve.

100% COTTON, 12 GG. 240 G/M<sup>2</sup>.

2112503 S-3XL

2122503 XS-XXL



181 CALVI BEIGE

479 DEEP LAVENDER

**PONCHO 2127000 ♀**

Fine knitted poncho with flatknitted edges. One size

50% WOLL, 50% ACRYLIC (DRALON®), 250 G/M<sup>2</sup>.

2127000 ONE SIZE



145 GREY MELANGE

565 BLUE FOG

**PORTLAND 2112508 ♂**  
**PORTLAND WOMAN 2122506 ♀**

Crew neck knitted sweater. 1 x 1 rib at neck, bottom and sleeves.

50% COTTON, 50% ACRYLIC (DRALON®), 12 GG. 230 G/M<sup>2</sup>.

2112508 S-3XL

2122506 XS-XXL





472 LIGHT PINK

**BRISBANE 2113015 ♂**  
**DORRIS OXFORD LADY S/S 2123015 ♀**

Classical oxford shirt with buttons in white pearl. Button-down collar and single chest pocket. Easy care treated.

100 % COTTON

2113015 S-XXL  
 2123015 S-XXL



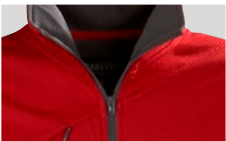
910 ANTHRACITE

**KENTON 2113023 ♂**  
**SIDNEY LADY BLOUSE 2123011 ♀**

Exclusive high quality men's shirt with short sleeves. Easy care-treated with taped seams. Chest pocket and engraved buttons.

100 % COTTON POPLIN

2113023 S-3XL  
 2123011 XS-XXL



400 RED

**GRIFTON 2132013 ♂**  
**GLADSTONE 2122028 ♀**

Men's double face sweatshirt with zip opening. Decoration seams with hidden zip for chest and front pocket opening. Contrast inside collar and zip. Wicking treatment, fast dry and wrinkle free.

100% POLYESTER, FLEECE INSIDE AND STRUCTURE JERSEY  
 OUTSIDE, 220 G/M<sup>2</sup>

2132013 S-3XL  
 2122028 XS-XXL



HARVEST ON SALE



100 WHITE

900 BLACK

**BURNEY 2131034** ♂

Water repellent unisex padded vest with water proof zippers, elastic drawstring at bottom hem and top of collar. Fleece in pocket bags and inside collar. Two zipped inner pockets, one with cord opening.

**SHELL: 100% POLYESTER / LINING/PADDING: 100 % POLYESTER**  
2131034 XS-3XL



400 RED

532 BLUE

**CONCORD 2131036** ♂  
**BRIDGEPORT 2121025** ♀

Functional jacket with zippers and piping in white contrast. Light, down like padding and soft polar fleece inside collar and front pockets. Waterproof, wind proof and highly breathable. Detachable hood and hidden ventilation zippers at sides. Elastic drawstring at hood and bottom hem. Two front pockets, one sleeve pocket and one inner pocket with cord opening for head phones.

**100 % NYLON**  
2131036 S-3XL  
2121025 XS-XL

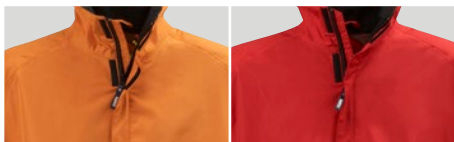


620 METAL BLUE

**DEER RIDGE 2131039** ♂

Quilted lightweight jacket with Thermolite® Micro. Fully lined. Hidden hood in the collar (invisible zip). Reversed coil zippers. Elastic binding at bottom hem and sleeves. The jacket can be tucked into the frontpocket as a travelbag.

**SHELL FABRIC; 100% PES, CIRE FINISH ON THE INSIDE, 56 GSM WITH 100% PES PADDING (THERMOLITE® MICRO, 60 GSM). LINING; 100% NYLON**  
2131039 S-3XL



303 ORANGE

477 RUBINE RED

**STONEWALL JACKET 2141000 ♂**  
**MUIRFIELD LADY JACKET 2151000 ♀**

Men's rain jacket. Front pockets and back pocket (perfect for scorecard and glove) with zipper. Drawstring at bottom hem. Soft and warm microfleece in collar. Reflective piping.

100% POLYESTER, SIDE PANELS: 86% POLYESTER, 14% ELASTANE.  
 LINING: 100% POLYAMIDE, MESH 100% POLYESTER

2141000 S-XXL  
 2151000 S-XXL



105 EGGSHELL

**OVERLAND 2131033 ♂**  
**WINGPOINT 2121021 ♀**

Shell jacket in Vent Air® quality, detachable hood, scooped back hem, contrast zippers, lining and printed check. Pre curved sleeves, elastic at bottom hem and hood, Velcro adjustment at bottom sleeves. Taped seams.

100 % NYLON WITH VENT-AIR COATING W/P 3000 MM MVP 4000 G/  
 M²/24H, LINING: 100 % POLYESTER

2131033 S-3XL  
 2121021 S-XXL



600 NAVY

**WESTLAKE 2111029 ♂**  
**WESTLAKE WOMAN 2121028 ♀**

Parka jacket in waterproof and breathable outer fabric. Equipped with practical pockets at front and inside jacket. Quilted inside lining with Harvest print all over. Adjustable drawstring at bottom hem and hood. Zipper at bottom sleeve with rib inside. 2-way zipper at front.

100% NYLON, WP 5000/MVP5000

2111029 S-3XL  
 2121028 XS-XXL



HARVEST ON SALE



HARVEST ON SALE



900 BLACK

**CUPERTINO 2137542**

Travel wallet made from hard-wearing nylon with a decorative PU edge. Several credit card pockets and additional room for business cards. One large zip pocket. Elegant lining in brown colour. 11 x 22cm.

1262D NYLON, PU-EDGE, LINING 100% POLYESTER

2137542 11 X 22CM



900 BLACK

**PACIFICA 2137541**

Ipad cover made from hard-wearing nylon with a decorative PU edge. Adaptable angle through several tilting steps. Elegant lining in brown colour. Compatible with Ipad (9,7"). 24 x 18.5 x 0.8 cm

1262D NYLON, PU-EDGE, LINING 100% POLYESTER

2137541 24 X 18.5 X 0.8 CM



900 BLACK

**SUNNY VALE 2137539**

Trolley bag made from hard-wearing nylon with a decorative PU edge. Spacious packing compartment with elastic straps to keep everything in place. Mesh inner pocket, and easy access outer pocket with holders for pens and phone. Padded computer case included. Wheels of good inline-quality and phased handle. Can easily be combined with computer bag Campbell. 42.5 x 22 x 32cm

1262D NYLON, PU-EDGE, LINING 100% POLYESTER

2137539 42.5 X 22 X 32 CM



HERITAGE  
ST



# INDEX

AMERICAN LADY T 2124002 ♀	42	COVENTRY 2131037 ♂	31	LOCKWOOD WOMAN 2121502 ♀	31	RICHMOND 2132017 ♂	30
AMERICAN T-SHIRT 2134011 ♂	42	COVENTRY WOMAN 2121026 ♀	31	LODGETOWN 2131042 ♂	24	RIPLEY 2145006 ♂	43
AMERICAN U 2134017 ♂	3	CUPERTINO 2137542	48	LODGETOWN WOMAN 2121040 ♀	24	ROCKINGFIELD 2111035 ♂	37
AMERICAN U WOMAN 2124008 ♀	3	DEER RIDGE 2131039 ♂	35	LYNN 2124003 ♀	5	ROCKINGFIELD W 2121036 ♀	37
AMERICAN V 2134018 ♂	3	DEER RIDGE WOMAN 2121032 ♀	35	MILES 2131501 ♂	28	SANTA ANA 2122034 ♀	30
AMHERST 2135028 ♂	42	DEER RIDGE VEST 2131040 ♂	35	MILES WOMAN 2121501 ♀	28	SHELLEN 2115001 ♂	10
AMHERST LADY 2125029 ♀	42	DEER RIDGE VEST W 2121037 ♀	35	MONTICELLO 2117502	40	SHELLEN WOMAN 2125032 ♀	10
ANDERSON 2135023 ♂	11	DEER RIDGE WOMAN 2121032 ♀	35	MUIRFIELD LADY 2151000 ♀	47	SIDNEY LADY BLOUSE 2123011 ♀	45
ANTREVILLE 2125025 ♀	11	DORRIS OXFORD LADY S/S 2123015 ♀	9	MYERS 2131041 ♂	29	SONETTE 2112510 ♂	19
APEX 2122035 ♀	14	DUKE 2132023 ♂	13	MYERS WOMAN 2121038 ♀	29	SONETTE WOMAN 2122507 ♀	19
ASHLAND TURTLE 2112513 ♂	17	DUKE WOMAN 2122039 ♀	13	NEPTUNE MODERN 2135032 ♂	7	STONETON 2114007 ♂	5
ASHLAND TURTLE W 2122510 ♀	17	FLATWILLOW 2112505 ♂	19	NEPTUNE REGULAR 2135031 ♂	7	STONETON WOMAN 2124007 ♀	5
ASHLAND U 2112512 ♂	17	GLADSTONE 2122028 ♀	45	NEPTUNE WOMAN 2125033 ♀	7	STONEWALL JACKET 2141000 ♂	47
ASHLAND U WOMAN 2122509 ♀	17	GREENVILLE MODERN 2135036 ♂	9	NORTH DERRY 2131500 ♂	32	SUMMITVILLE 2117500	41
ASHLAND V 2112507 ♂	16	GREENVILLE REGULAR 2135035 ♂	9	NORTH DERRY WOMAN 2121500 ♀	32	SUNNY VALE 2137539	48
ASHLAND V WOMAN 2122505 ♀	16	GREENVILLE WOMAN 2125036 ♀	9	NOTTINGMOON LADY 2122503 ♀	44	SUNSET MODERN 2135034 ♂	9
ATLANTA 2132018 ♂	14	GRIFTON 2132013 ♂	45	NOTTINGMOON 2112503 ♂	44	SUNSET REGULAR 2135033 ♂	9
AURORA 2125020 ♀	42	HARRINGTON 2111031 ♂	27	NOVAHILL 2132019 ♂	14	SUNSET WOMAN 2125034 ♀	9
AVON 2135024 ♂	11	HARTLINE 2135019 ♂	42	NOVAHILL WOMAN 2122019 ♀	14	TREEMORE 2113037 ♂	23
AVON WOMAN 2125026 ♀	11	HUNTINGVIEW 2111030 ♂	27	OFFICER 2116004 ♂	39	TREEMORE WOMAN 2123027 ♀	23
BALTIMORE 2113030 ♂	21	HUNTINGVIEW WOMAN 2121030 ♀	27	OFFICER WOMAN 2126006 ♀	39	TRIBECA 2113032 ♂	21
BALTIMORE WOMAN 2123020 ♀	21	HURSTBRIDGE 2111034 ♂	37	OVERLAND 2131033 ♂	47	TRIBECA WOMAN 2123022 ♀	21
BRIDGEPORT 2121025 ♀	46	HURSTBRIDGE WOMAN 2121035 ♀	37	PACIFICA 2137541	48	TWOVILLE 2114005 ♂	4
BRINKLEY 2111036 ♂	36	ISLANDBLOCK 2131038 ♂	33	PARKWICK 2111033 ♂	14	TWOVILLE WOMAN 2124005 ♀	44
BRINKLEY WOMAN 2121039 ♀	36	ISLANDBLOCK WOMAN 2121031 ♀	33	PARKWICK WOMAN 2121034 ♀	14	WESTLAKE 2111029 ♂	47
BRISBANE 2113015 ♂	45	JUPITER 2113035 ♂	22	PONCHO 2127000 ♀	18	WESTLAKE WOMAN 2121028 ♀	47
BROCKWAY 2112511 ♂	19	JUPITER WOMAN 2123025 ♀	22	PONCHO 2127000 ♂	44	WESTMORE 2112509 ♂	18
BURLINGHAM 2113038 ♂	22	KENTON 2113023 ♂	45	PORTLAND 2112508 ♂	44	WESTMORE WOMAN 2122508 ♀	18
BURLINGHAM WOMAN 2123028 ♀	22	KEY RING 2117004	40	PORTLAND WOMAN 2122506 ♀	44	WHAILFORD 2114006 ♂	4
BURNLEY 2131034 ♂	46	KINGSFORT 2111032 ♂	27	PORTWILLOW 2114008 ♂	2	WHAILFORD WOMAN 2124006 ♀	4
BURNWOOD 2137003 ♂	38	KINGSFORT WOMAN 2121033 ♀	27	RAWLINS 2145007 ♂	43	WINGPOINT 2121021 ♀	47
CARD HOLDER 2117005	40	KNOWVILLE 2112501 ♂	43	REDDING 2113033 ♂	20	WOODLAKE 2111037 ♂	25
CARSON 2116005 ♂	39	L.A. 2137002 ♂	38	REDDING WOMAN 2123023 ♀	20	WOODLAKE WOMAN 2121041 ♀	25
CARSON WOMAN 2126007 ♀	39	LAFAYETTE 2124001 ♀	5	RENO 2113031 ♂	21	WOODRIDGE 2117501	41
CONCORD 2131036 ♂	46	LARKFORD 2135030 ♀	10	RENO WOMAN 2123021 ♀	21		
CORNELL 2132022 ♂	13	LARKFORD WOMAN 2125031 ♀	10	RICH HILL 2131503 ♂	30		
CORNELL WOMAN 2122038 ♀	13	LOCKWOOD 2131502 ♂	31	RICH HILL WOMAN 2121503 ♀	30		

## SYMBOLS.



**Functional Garment:**  
Wind and water proof garment with moisture vapor transport and taped seams.



Water Proof 3000 mm  
MVP >5000/m<sup>2</sup>/24h



Water Proof 5000 mm  
MVP >4000/m<sup>2</sup>/24h



Water proof 10.000 mm  
MVP >8000/m<sup>2</sup>/24h



Washable at 60° C



Wind Proof



Wind Resistant



Water Proof



Water Resistant



Stretch fabric.  
Contains Lycra, Spandex or Elasthane.



Garment is  
Oeko-Tex Certified  
Contact us for valid numbers



Branding  
The material requires special  
techniques for branding



Easy Care Treated



New catalogue item

COLOUR DIFFERENCES BETWEEN THE PHOTO AND THE ACTUAL GARMENT MAY ARISE DUE TO PHOTO TECHNICAL REASONS. THERE MIGHT ALSO BE DIFFERENCES BETWEEN AN IMAGEPICTURE AND A PRODUCT PICTURE OF THE SAME GARMENT. IN THESE CASES PLEASE REFER TO THE PRODUCT PICTURES IN THE FIRST INSTANCE.

E. & O. E.



JAMES HARVEST SPORTSWEAR IS ALL ABOUT PERFORMANCE. PERFORMANCE IN ICE COLD, POURING RAIN OR SIMPLY LOOKING EXCELLENT AFTER A HECTIC DAY AT THE OFFICE. WE HAVE SET THE STANDARDS FOR JAMES HARVEST WAY UP HIGH AND WE KNOW YOU HAVE AS WELL. TO REACH THESE STANDARDS WE NEED HELP. HELP FROM OTHER EXPERTS THAT KNOW HOW TO MAKE THE FABRICS STRONGER, LIGHTER, REPELLENT WITH VENTILATION AND SO ON.

**Thermolite**<sup>®</sup>  
THERMOLITE

**CORDURA**<sup>®</sup>  
CORDURA

  
SORONA

  
DRALON

  
BARUFFA

**LYCRA**<sup>®</sup>  
LYCRA<sup>®</sup>

HIGH QUALITY  
YARN BY  
  
TUV

JAMES HARVEST SPORTSWEAR  
SPRING/SUMMER 2021

HARVEST/SS2021/EN

JAMES  
**HARVEST**  
sports  wear

